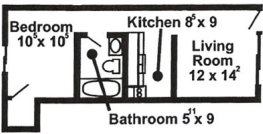


Leasing Information

Leasing Information	Small One Bedroom			
\$575/ Mo.	Large One Bedroom Phase 1			
\$595/ Mo.	Large One Bedroom Phase 2			
\$595 / Mo.	Two Bedroom			
\$850 / Mo.	Three Bedroom			
\$1110 / Mo.				
Apply Now	Apply Now	Apply Now	Apply Now	Apply Now
Deposit	\$200*	\$200*	\$200*	\$200*
Pet Fee	\$30 / Mo.	\$30 / Mo.	\$30 / Mo.	\$30 / Mo.
Pet Fee	\$300 Initial non refundable pet fee	\$300 Initial non refundable pet fee	\$300 Initial non refundable pet fee	\$300 Initial non refundable pet fee
Water, Sewer, Trash and	at			
✓				
✓				
✓				
✓				
Apartment Amenities				
First Floor Apartment	✓			
✓				
✓				
Second Floor Apartment	✓			
✓				
✓				
✓				
✓				
Private Entrances	✓			
✓				
✓				
✓				

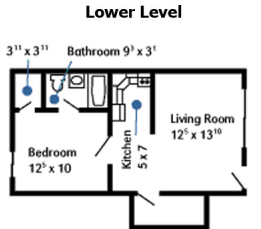
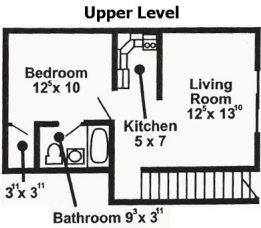


Spacious Floor Plans {ppgallery}



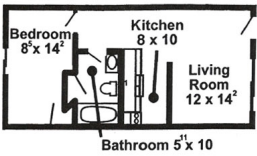
{/ppgallery}

{ppgallery}



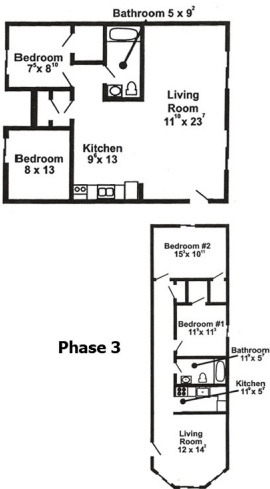
{/ppgallery}

{ppgallery}



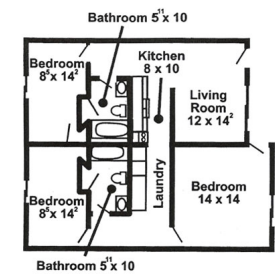
{/ppgallery}

{ppgallery}



{/ppgallery}

{ppgallery}



{/ppgallery}

Cable Ready ✓



Spacious Closets ✓



Ample Kitchen Cabinets ✓



Deadbolt Locks ✓



Smoke Detectors ✓



Stove & Refrigerator ✓

✓

✓

✓

✓

Tanning ✓

✓

✓

✓

✓

Dog Park ✓

✓

✓

✓

✓

Security ✓

✓

✓

✓

✓

Included Utilities
Prompt Maintenance ✓

✓

✓

✓

✓


24 Hr Emergency Assistance ✓

✓


✓

✓


✓

Lawn Care & Snow Rem 




Water, Sewer, Trash and  at



Community Amenities
Directly Across from HCC 




Close to Crossroads Mall 



Off-Street Parking 



Sand Volleyball Court 





Basketball Court



Student Life Activities



Professional Staff



Pet Friendly



Close to Lost Island Watermark



Close to the Isle Casino





Wide Screen Theater

